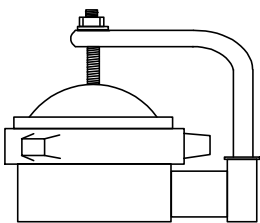
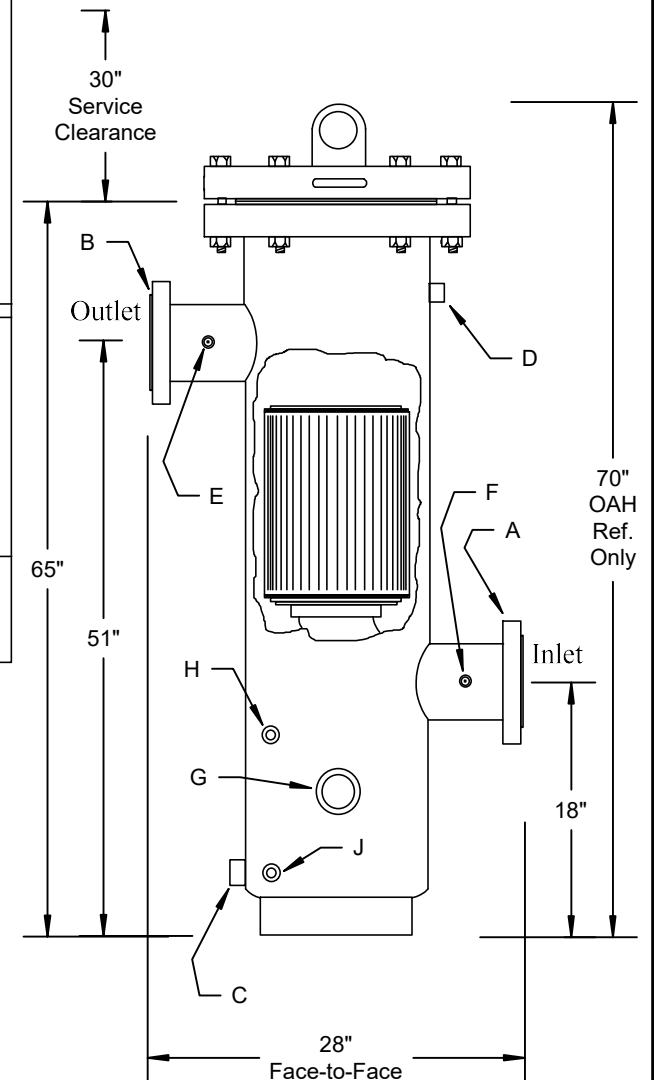
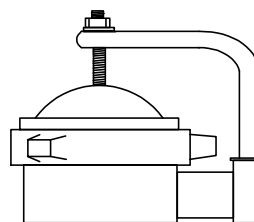


# VESSEL DATA SHEET

|                            |   |   |                   |      |      |           |           |
|----------------------------|---|---|-------------------|------|------|-----------|-----------|
| Design Parameters          |   | Schedule of Openings  |                   |      |      |           |           |
| Pressure, Max. at Inlet    | 285 psi                                 | Service   | See Dwg.          | Qty. | Size | Rating    | Type      |
| Temperature                | 100 F                                   | Inlet   | A                 | 1    | 8"   | 150# ANSI | Flange    |
| Corrosion Allow.           | 0.00"                                   | Outlet  | B                 | 1    | 8"   | 150# ANSI | Flange    |
| Code Standard              | ASME Sect. VIII, Div. 1                 | Drain   | C                 | 1    | 1"   | 3000#     | Coupling  |
| Stamped?                   | Optional                                | Vent  | D                 | 1    | 1"   | 3000#     | Coupling  |
| Operating Parameters       |   | Press. Tap  | E                 | 1    | 1/4" | 3000#     | Coupling  |
| Pressure, Max.             | 285 psi                                 | Press. Tap  | F                 | 1    | 1/4" | 3000#     | Coupling  |
| Temperature                | 100 F                                   | Float Switch  | G                 | 1    | 2"   | 3000#     | Coupling  |
| Gas Flow Rate              | 2,600,000 scfh @ 285 psi                | Sight Glass   | H                 | 1    | 1/2" | 3000#     | Coupling  |
| Gas Specific Gravity       | 0.60                                    | Sight Glass   | J                 | 1    | 1/2" | 3000#     | Coupling  |
| Vessel Testing             |   | Materials of Construction   |                   |      |      |           |           |
| Hydrotest Pressure         | 428 psi                                 | Shell   | SA53B             |      |      |           | Thickness |
| Pneumatic Test Pressure    | N/A                                     | Bottom Head   | SA234WPB          |      |      |           | 0.375"    |
| Radiograph                 | Optional with U-Stamp                   | In/Out Piping   | SA53B             |      |      |           | 0.500"    |
| Magnetic Particle          | Optional with U-Stamp                   | Flanges   | SA105             |      |      |           | ANSI 150# |
| Dye Penetrant              | Optional with U-Stamp                   | Couplings   | SA105             |      |      |           | 3000#     |
| Filtration Performance     |   | Closure Gasket  | Fiber Flat Gasket |      |      |           | 0.188"    |
| Filter Element P/N         | #2054K907                               | Ring Base   | SA53B             |      |      |           |           |
| Type of Filter Media       | Borosilicate Fiberglass                 | Shipping Information  |                   |      |      |           |           |
| Retention Rating           | 0.3 micron                              | Total Weight  | 700#              |      |      |           |           |
| Efficiency of Retention    | 99.9%                                   | <div>Optional Threaded Quick Opening Modco Closure</div>  |                   |      |      |           |           |
| No. of Elements            | 1                                       |   |                   |      |      |           |           |
| Design Clean Press. Drop   | 0.33 psid                               |   |                   |      |      |           |           |
| Changeout Press. Drop      | 10 psid                                 |   |                   |      |      |           |           |
| Closure Specifications     |   |   |                   |      |      |           |           |
| Type                       | Blind Flange                            |   |                   |      |      |           |           |
| Gasket Type                | Fiber Type, #16-150                     |   |                   |      |      |           |           |
| Type of Lifting Assistance | Hinge/Handle                            |   |                   |      |      |           |           |
| Internal Finish            |   |   |                   |      |      |           |           |
| Sandblast                  | Light                                   |   |                   |      |      |           |           |
| Oil Coat                   | None                                    |   |                   |      |      |           |           |
| Glyptol Coat               | None                                    |   |                   |      |      |           |           |
| External Finish            |   |   |                   |      |      |           |           |
| Sandblast                  | SP-10 Commercial                        |   |                   |      |      |           |           |
| Finish Coat                | (2) Coats PPG Grey Enamel Primer/Finish |   |                   |      |      |           |           |
| Sump Capacity              | 14 gallons                              |   |                   |      |      |           |           |

Optional Threaded  
Quick Opening  
Modco Closure



**FilterFab**  
MANUFACTURING CORPORATION  
**Model C8-285F Coalescing Filter**